

Starting April 1<sup>st</sup>, 2026

# The Blue Ticket system will be introduced for bicycles (Traffic Violation Notification System)

Bicycles are a mode of transportation used by a wide range of age groups for commuting, going to school, shopping and many other purposes. The number of bicycle related accidents, particularly those involving pedestrians, is on the rise. The bicycle “blue ticket” system aims to raise awareness among individual riders about obeying traffic rules and to promote bicycle safety.

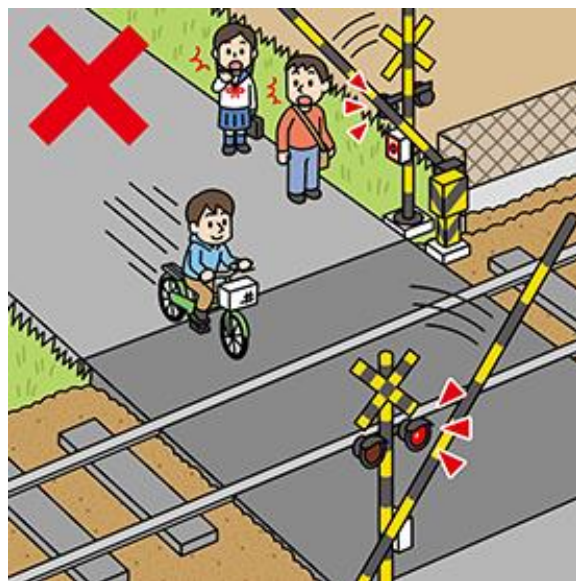
## Examples of Violations and Fines

Enforcement will apply to those aged **16 years** and over

Illustration source: Cabinet Office



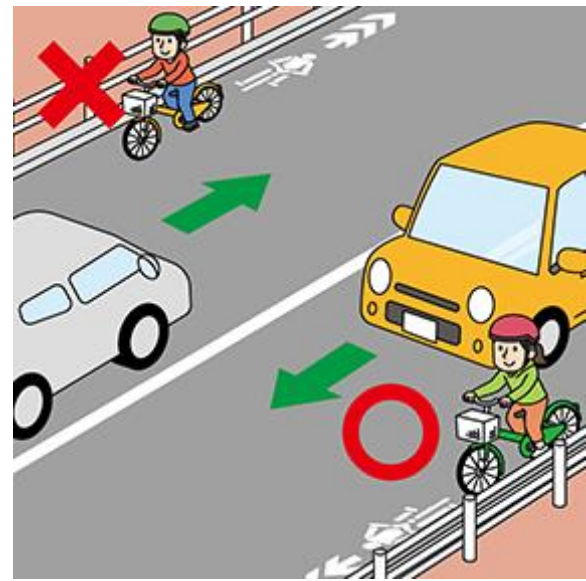
Use of cell phone (holding it while riding)  
Fine: 12,000 yen



Riding through barriered railroad crossings  
Fine: 7,000 yen



Disregarding traffic signals (red lights, walk signals, etc.)  
Fine: 6,000 yen



Riding on the right-hand side  
Fine: 6,000 yen



Not stopping at stop signs  
Fine: 5,000 yen



Riding with headlights off  
Fine: 5,000 yen



Use of earphones  
Fine: 5,000 yen



Riding side by side  
Fine: 3,000 yen

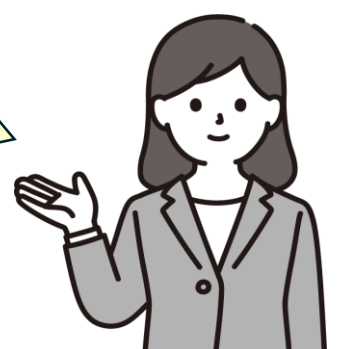
Acts subject to the Blue Ticket system

**113** different types in total



Riding together  
Fine: 3,000 yen

Wear a **helmet** to **protect** your head!



About the Blue Ticket system (National Police Agency)▶

