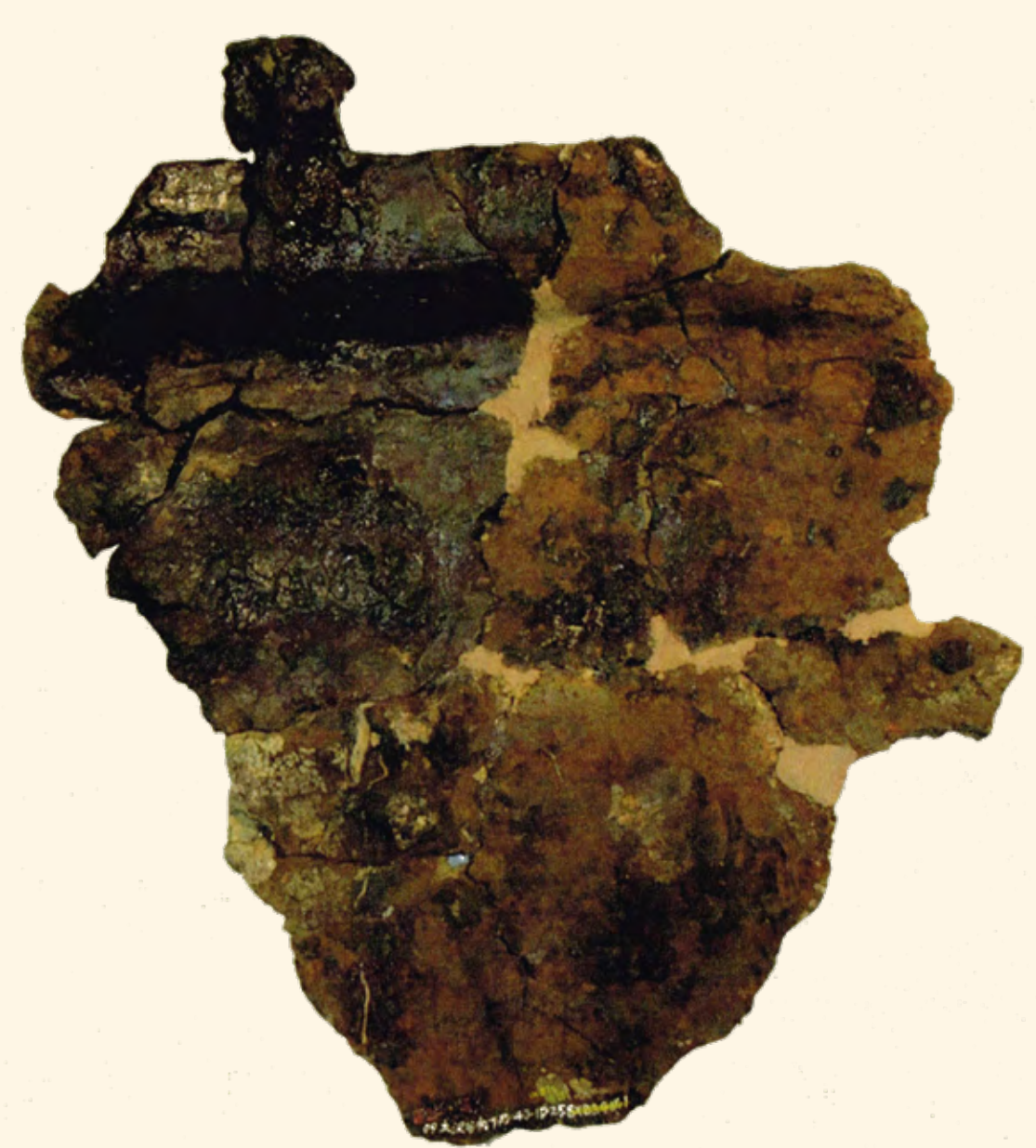


アスファルトは どのように 作られたのか？

How was asphalt made?

Jomon pottery inside which asphalt was attached, and lumps of asphalt were found at the Osawayachi Site (Niigata City). As there is a place where oil upwells nearby the Osawayachi Site, it is thought that asphalt was produced by heating crude oil in clay pots. What is thought to be the residue generated when asphalt is produced was also discovered.

Pottery with asphalt attached found at the Osawayachi Site



Asphalt coating the inside of the pottery.
It shows that it once contained liquid-like asphalt.



Asphalt containing less impurities



Asphalt containing a lot of impurities (magnified view on the right)



An experiment making asphalt

Collection of crude oil

Crude oil to be used as an experimental material was collected from that welling up in Amagasawa in the Niitsu Hills located in the Akiha Ward of Niigata City.



Refining the asphalt

Crude oil was put in a pottery, which was slowly heated up with glowing embers, as impurities were removed. When the crude oil became sticky, it was put into another container, with the impurities left behind inside the pottery, and allowed to cool. It then became the same as the asphalt found at the Miyahata Site. It is thought that the Jomon people made asphalt in the same way.

